

**International
Science Council**

Updates from the International Science Council

Vanessa McBride | Science Director | October 2025



Affiliated Bodies of the ISC

Research Programmes



Data Bodies



Observing Systems



Networks



Scientific Committees



IUCAF



Our Membership



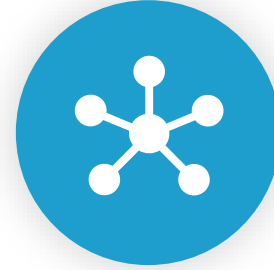
140+

National and Regional Scientific Organizations, including Academies and Research Councils



40+

International Scientific Unions and Associations, across the natural and social sciences



15

Affiliated Bodies, including research programme, scientific committees and data bodies



70

International Affiliates, including organizations like The World Academy of Sciences, the International Institute for Applied Systems Analysis, the Global Young Academy



A mutualistic relationship

- Established in response to a need for coordination on issue of global concern
- Provide a foundational legitimacy to issues that ISC can raise in policy dialogues
- ISC provides a high level “home” and the absence of country-specific agendas

ISC Strategic Priorities 2025 - 2028

1. Freedom, Responsibility & Inclusivity in science

2. International science agenda setting

3. The evolution of science systems

4. Science for evidence-based policy-making

5. Science diplomacy

For the SCOR community

1. Freedom, Responsibility & Inclusivity
in science

2. International science agenda setting

3. The evolution of science systems

4. Science for evidence-based policy-
making

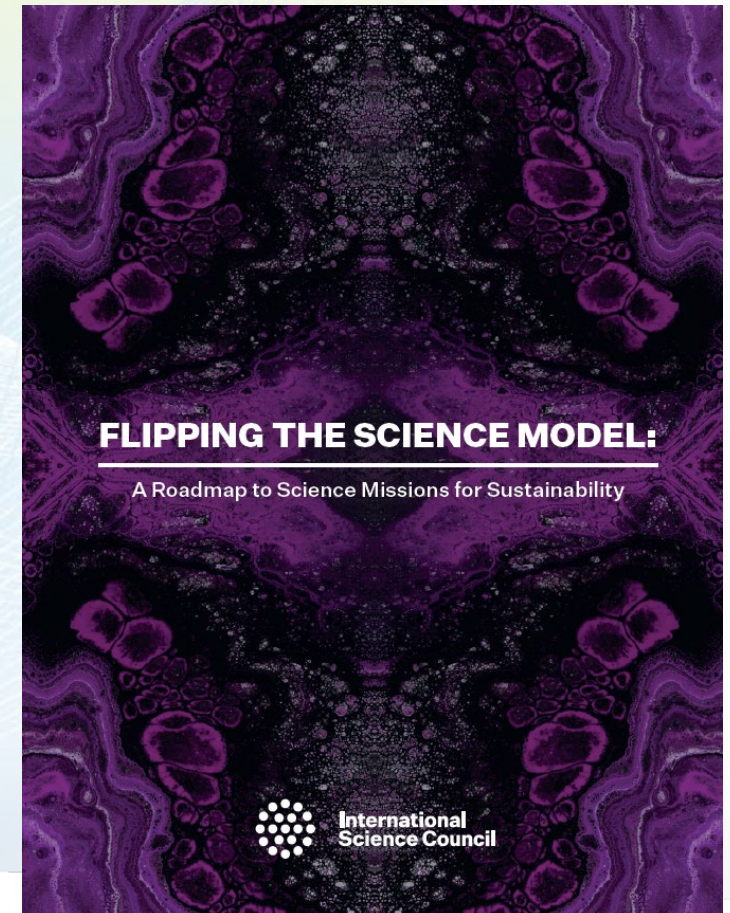
5. Science diplomacy

Increasing the impact of science

1. A missions-based approach to sustainability science
2. The move to transdisciplinary science
3. Pathways to impact in policy

Increasing the impact of science

1. A missions-based approach to sustainability science



Increasing the impact of science

1. A missions-based approach to sustainability science

Focus on *how* not *what*

We need integrated science that works with society to generate actionable knowledge in the pursuit of transformations to sustainability

Increasing the impact of science

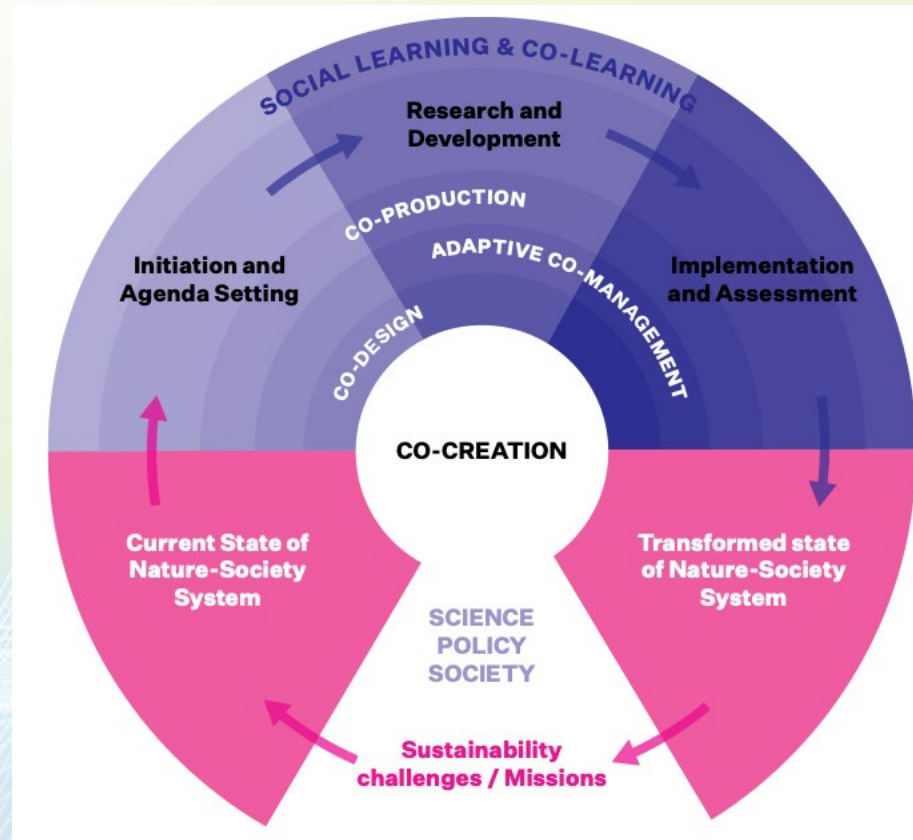
1. A missions-based approach to sustainability science

Launched 2 pilot science missions in Oman, January 2025

Long-term continued engagement with funders

Increasing the impact of science

2. A move to transdisciplinary science



Adapted from Hakkarainen et al. 2022

Increasing the impact of science

2. A move to transdisciplinary science

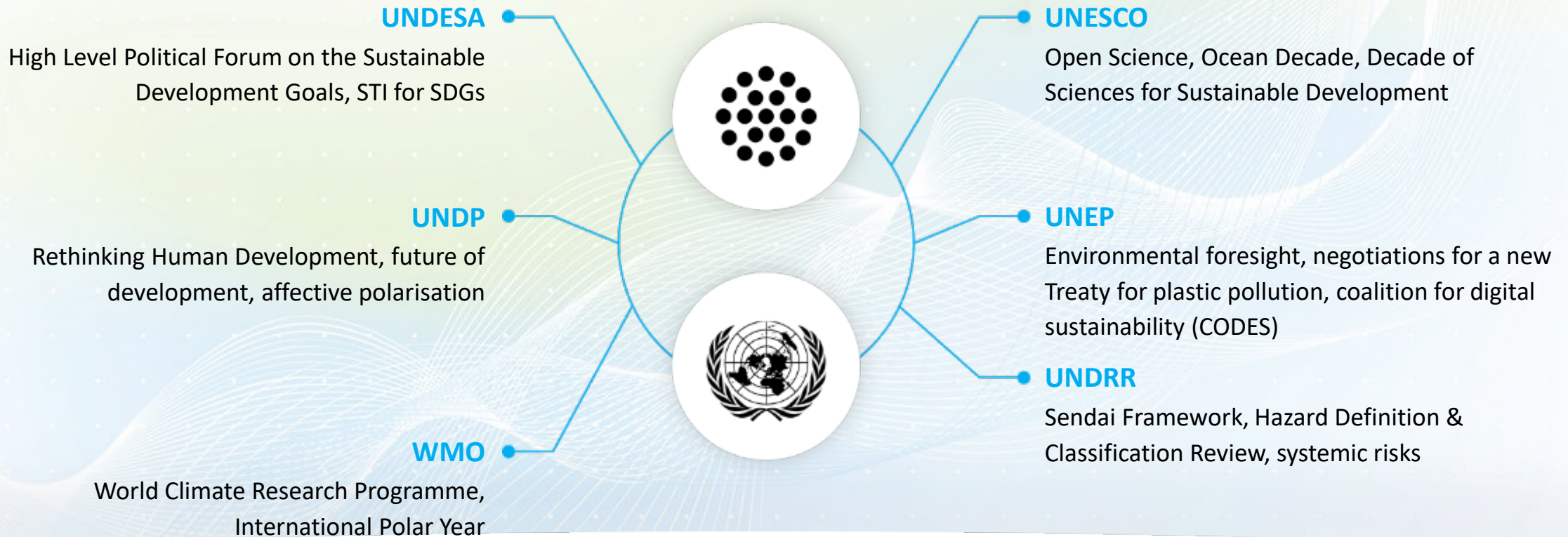
Barriers for scientists:

- Short-term contracts
- Relationship building
- Incentive and reward systems
- A reorientation from what's interesting to what's important

Increasing the impact of science

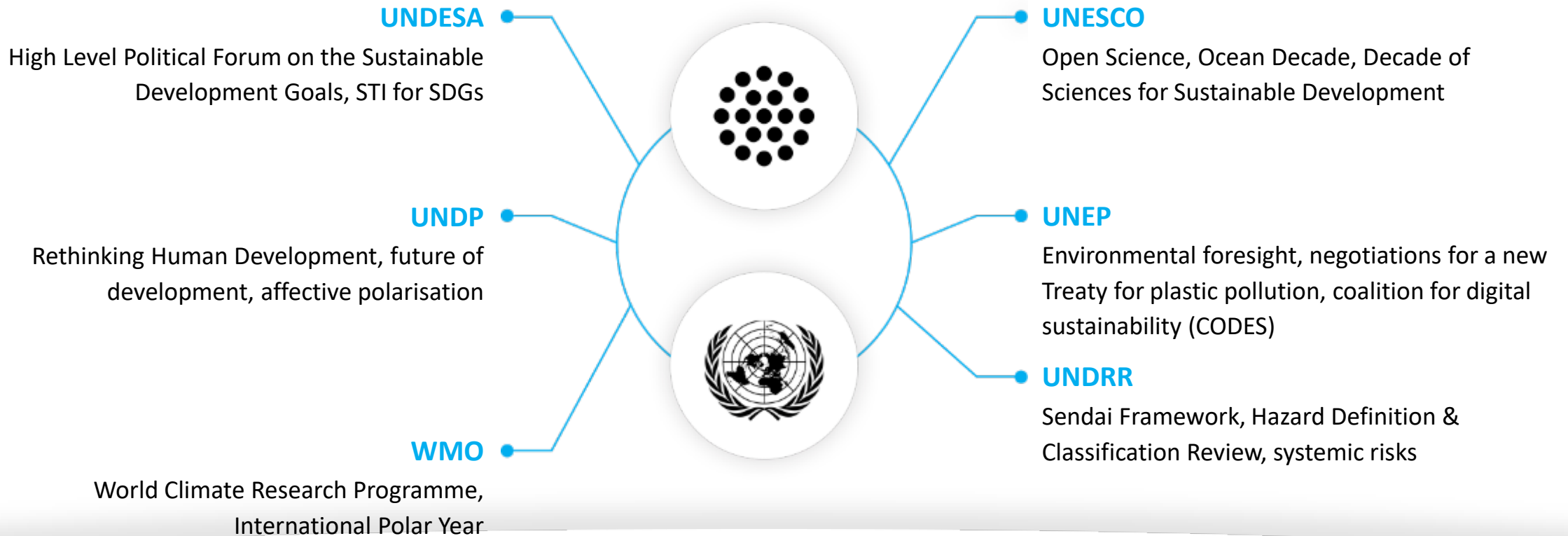
3. Pathways to impact in policy

- The ISC is a Lead Coordinator of the UN Major Group for Science and Technology with WFEO
- The ISC is part of the UN Secretary-General Scientific Advisory Board.
- The ISC supports the Group of Friends on Science for Action convened by South Africa, India and Belgium
- The ISC works closely with a number of UN Secretariats/Agencies:



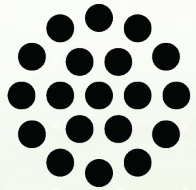
Embedding the ISC at the UN

- The ISC is a Lead Coordinator of the UN Major Group for Science and Technology with WFE0
- The ISC is part of the network supporting the UN Secretary-General Scientific Advisory Board.
- The ISC supports the Group of Friends on Science for Action convened by South Africa, India and Belgium
- The ISC works closely with a number of UN Secretariats/Agencies:



Feedback/discussion

- Policy advice to the multilateral system: utilise existing pathways
- ISC facilitating exchange, capacity sharing and potentially joint action in some areas between our affiliated bodies, e.g. statement for COP30.
- Links with Early and Mid Career Researchers
- ????



**International
Science Council**

in [company/international-science-council](https://www.linkedin.com/company/international-science-council)

f [InternationalScience](https://www.facebook.com/InternationalScience)

@ [@council.science](https://www.instagram.com/council.science)

🦋 [sciencecouncil.bsky.social](https://bsky.app/profile/sciencecouncil.bsky.social)

Get in touch!

vanessa.mcbride@council.science